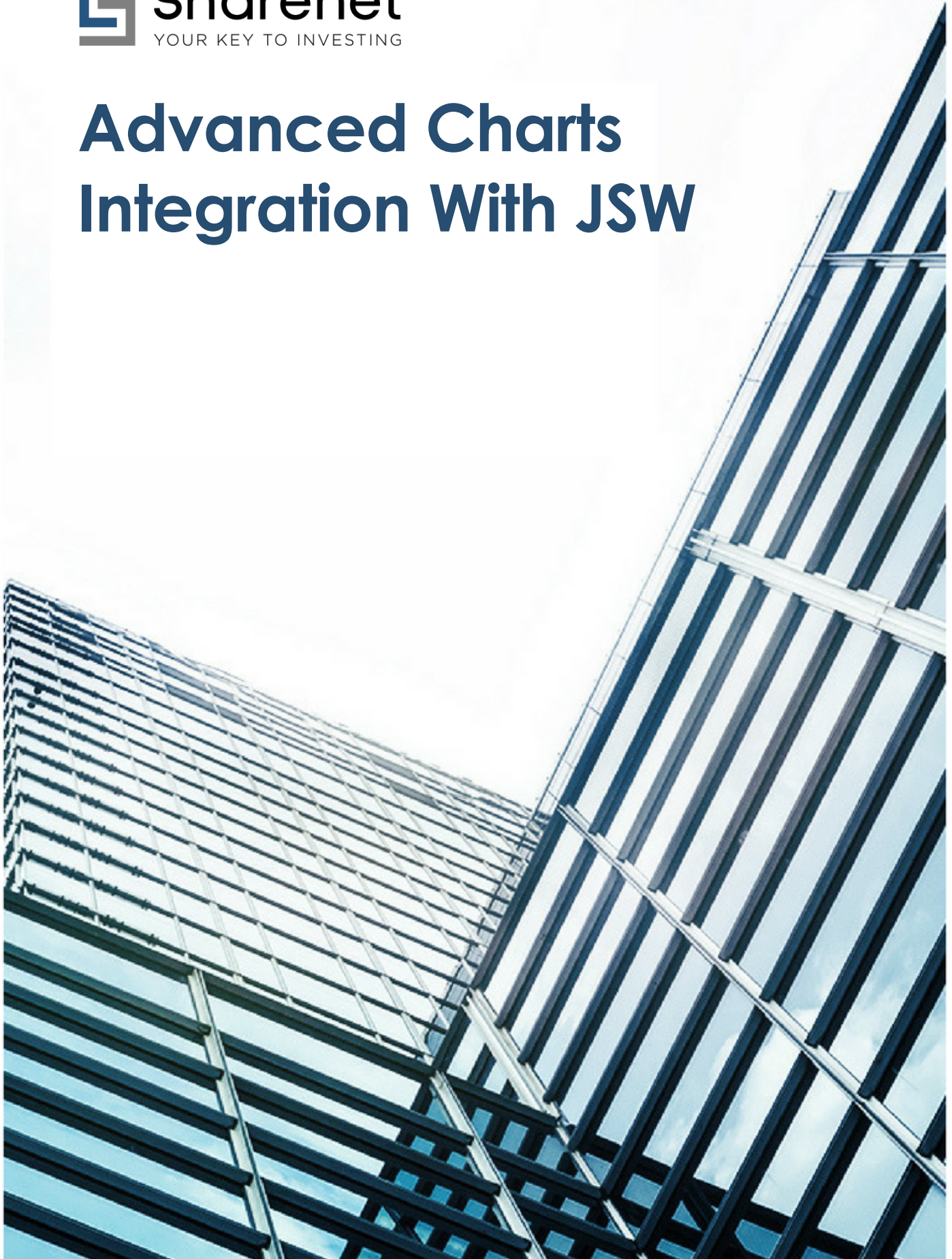


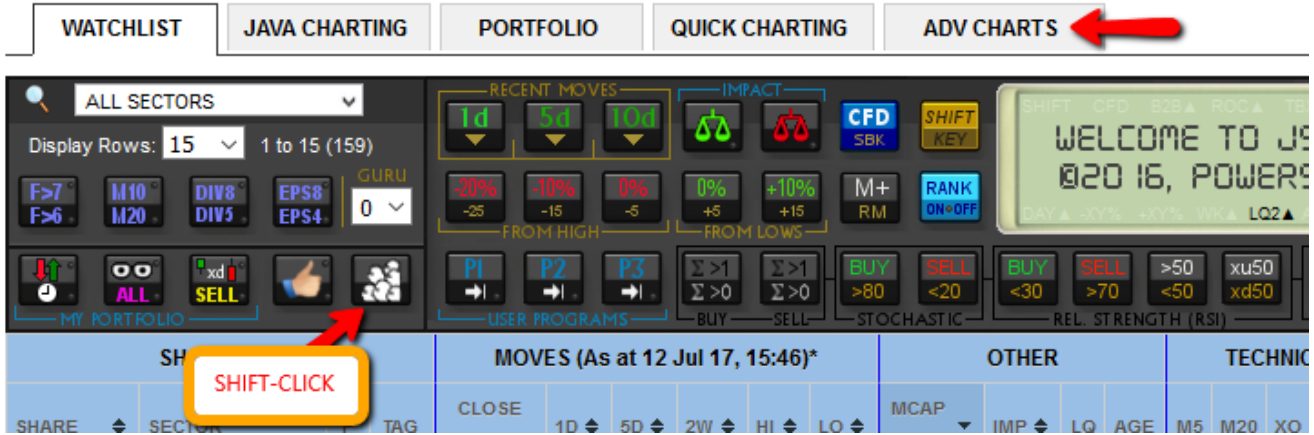


Advanced Charts Integration With JSW



Introduction

Advanced Online Charts are finally integrated with JSW-ONLINE. We used to use the Java Charts for longer term history and advanced charting features but Java does not work on mobile devices and gives problems with many browsers. We have replaced the secondary group charts function to redirect to Advanced Charts (only if you have an Advanced Charts bolt-on subscription).

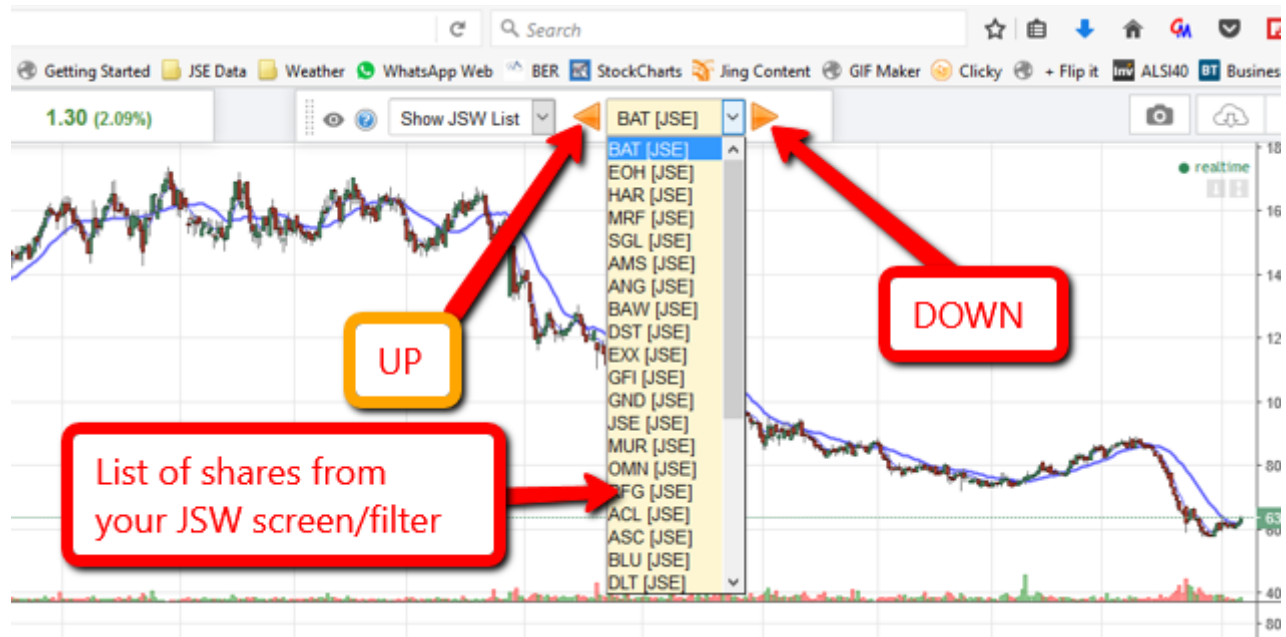


You can still use Java Charts as normal by clicking on the JAVA CHARTING tab. You can get a bolt-on here <https://trade.sharenet.co.za/v3/signup.php?level=CHARTADD>.

When you do the SHIFT-click or click on ADV CHARTS, you will be taken to a full-screen Advanced Charts view on a separate browser tab, showing the first share in the JSW watchlist. If you have not signed into the new Sharenet platform you will be prompted with a username and password login to check you have a Advanced Charts subscription (you only have to do this once) and you will see something like this:



*Note that the standard technical indicators used by JSW are automatically opened for you, namely the 5 and 20-day moving averages, the RSI, ROC and the Stochastic. You can now scroll through your JSW shortlist right from within the chart by clicking the UP and DOWN buttons on the list showing the shares taken from the JSW when you clicked on ADV CHARTS:



You can also use your mouse to go directly click on a share in the list to load it. You can modify a chart and SAVE it, but you will have to specifically LOAD it again to see your changes. JSW won't remember what you did to the chart if you view the same share from another screen/filtering operation.